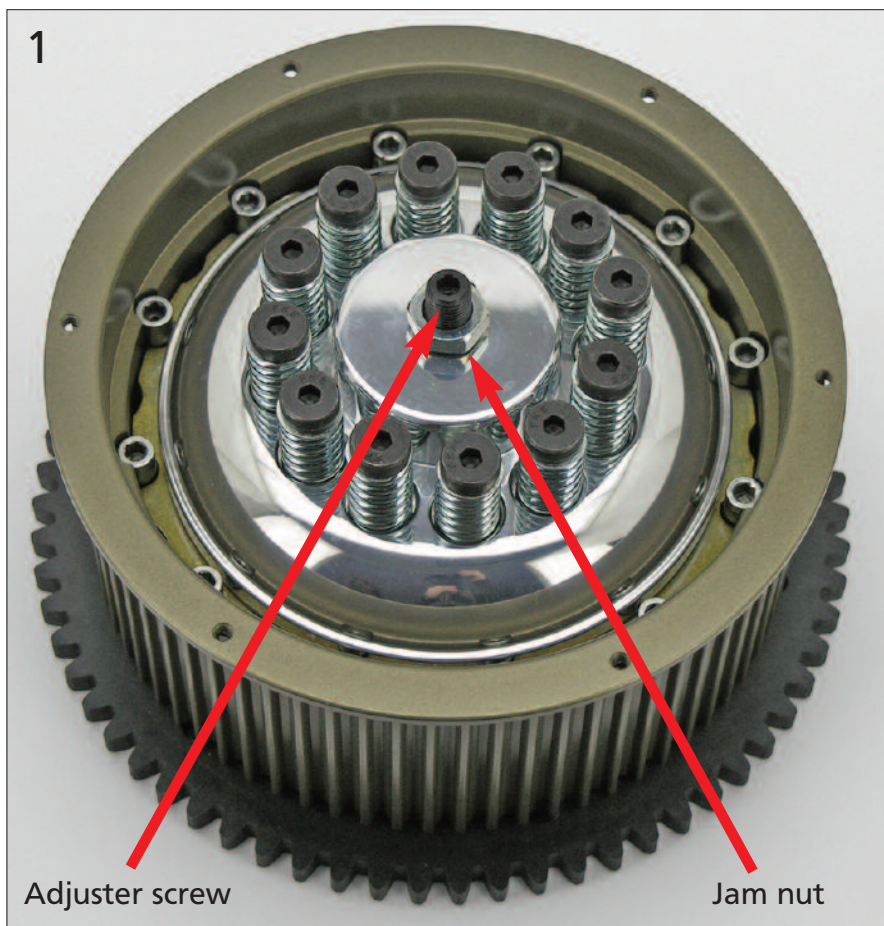




ZPN 144712

INSTALLATION INSTRUCTIONS ZPN 144712: AUTO CLUTCH FOR 3" BELT DRIVES



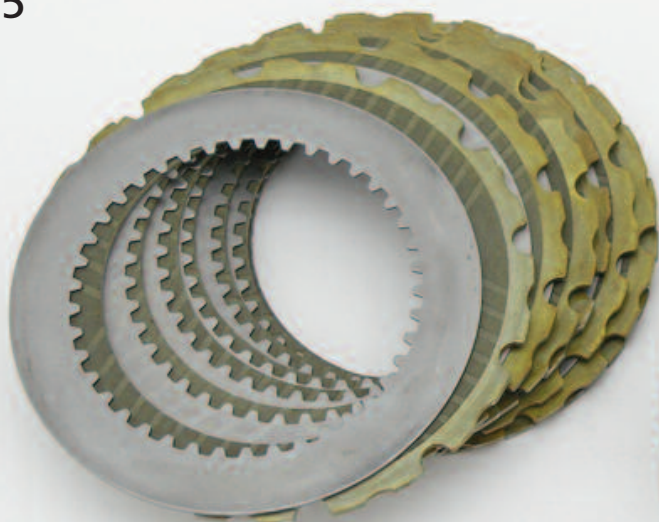
1. Remove adjuster screw by first loosening the jam nut and then back the allen adjuster bolt completely out

2

Shoulderbolts
& Springs

2. Remove the shoulder bolts and clutch springs [THIS IS NOT TO BE USED AGAIN]
3. Remove the pressure plate [THIS IS NOT TO BE USED AGAIN]
4. Remove ALL clutch discs and plates
5. Remove six outer drive dowels (which is every other one), the other 6 dowels will be left in place
6. Install the six new supplied dowels in the spaces where you just removed the original six

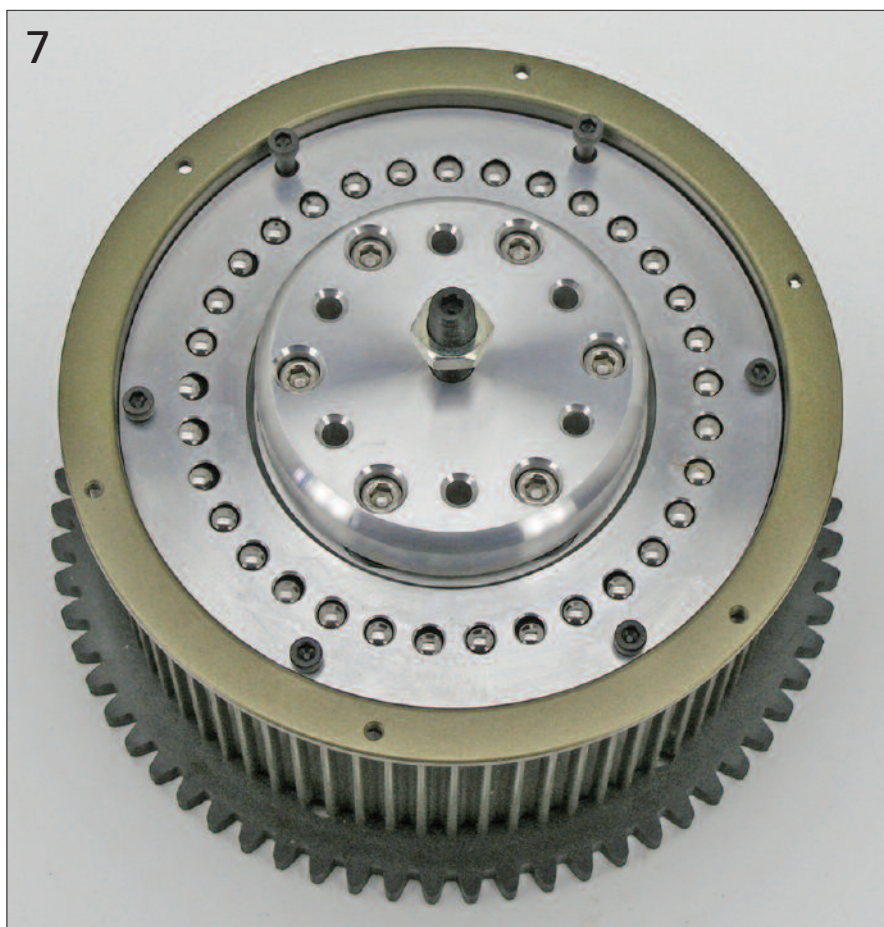
5



Dowels



7



7. First install clutch plates. Install new pressure plate assembly using supplied allen head screws with the supplied thread locker on the threads.

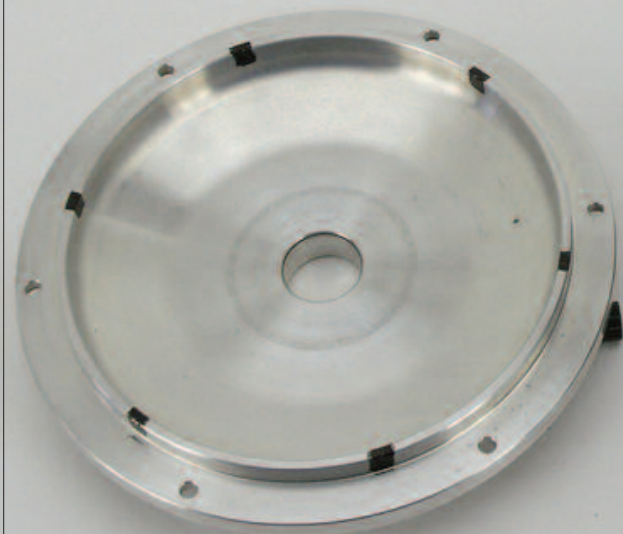
At this point check for proper clearance by pushing in on the center of the pressure plate. you should have 0.070" - 0.100" of movement. If you do not have the 0.070" -0.100" travel replace the supplied steel plate with the original thin plate and repeat steps.

8. IMPORTANT (8.1, 8.2, 8.3)

Installation on ZPN 210500 and 210501 in conjunction with ZPN 210324 or 210325 Outboard Bearing Support Kit requires the custom fabrication of 6 indents to clear for the bolts that hold the Outboard Bearing Support,

8.1

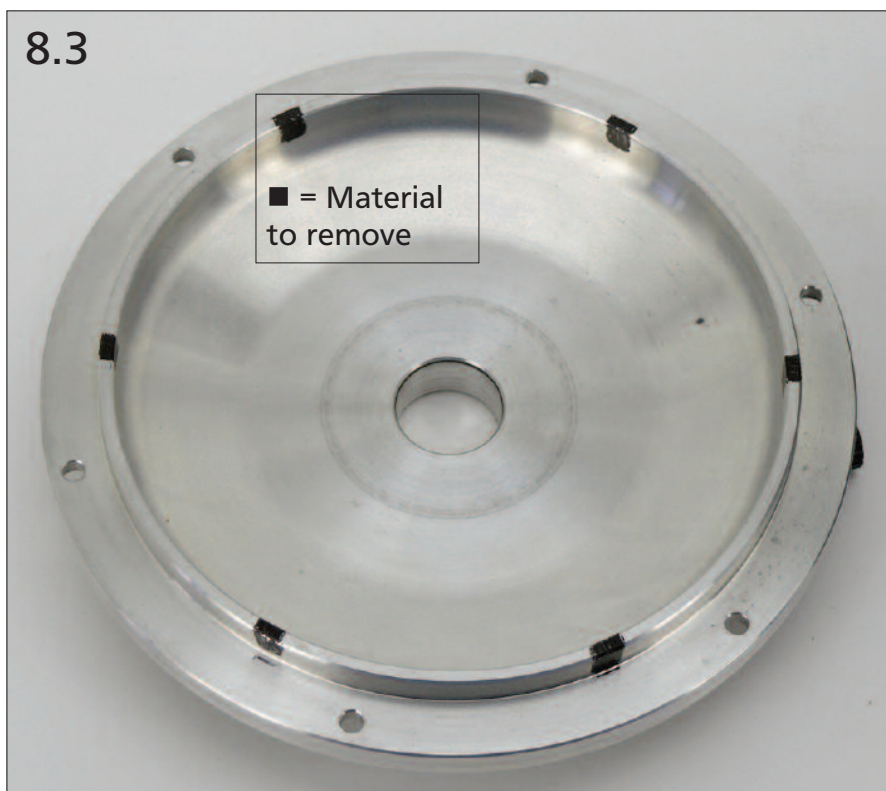
ZPN 210324/210325
Outboard Bearing Support





8.2

You may skip this step when you do not have an Outboard Bearing Support Kit



8.3

9. Install adjuster bolt and jam nut. Adjust clutch for proper free travel. Run adjuster in until it just touches, Then back it out TWO FULL TURNS. This is a good starting point. Clutches typically adjust properly between 1/2 and 3 full turns.

Adjust clutch cable for correct free play to 1/16"-1/8".